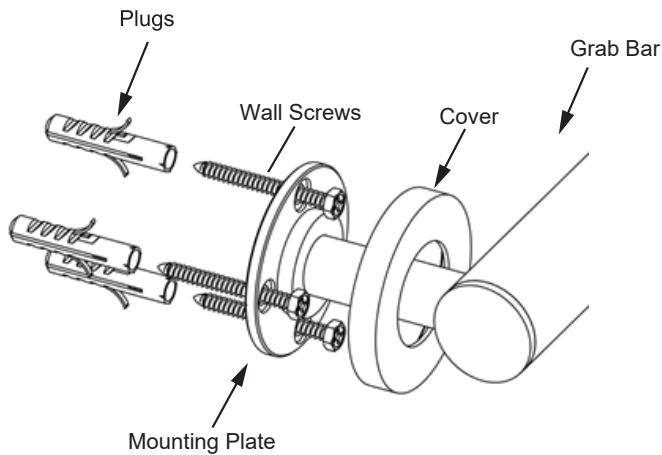


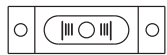
## 9100 SERIES (1.5"/35mm)

### GRAB BAR

AVAILABLE IN: 12"/18"/24"/32"/36"/42"  
 8289112-35mm/9118-35mm/9124-35mm/  
 9132-35mm/9136-35mm/9142-35mm



#### Tools required for installation



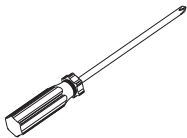
Level



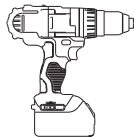
Pencil



Wrench



Screwdriver



Drill



Hammer

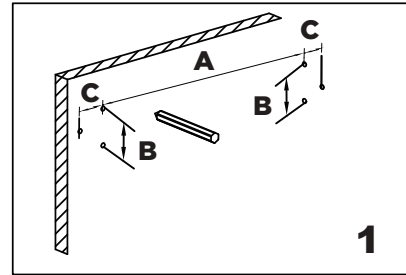
A=Plate TOP holes center to center distance

B=Plate TOP hole to BOTTOM hole distance

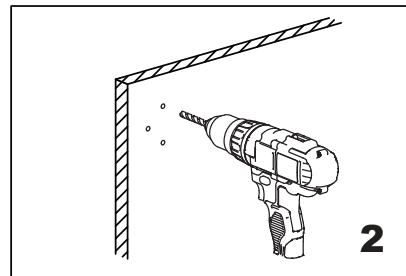
C=Plate TOP/BOTTOM holes to MID hole distance

Product Code	Sizes (Inches/mm)		
	A	B	C
8289112-35mm	11 3/4" /300	1 3/4"/45	1"/22.5
8289118-35mm	17 3/4"/450	1 3/4"/45	1"/22.5
8289124-35mm	23 5/8"/600	1 3/4"/45	1"/22.5
8289132-35mm	31 1/2"/800	1 3/4"/45	1"/22.5
8289136-35mm	35 1/2"/900	1 3/4"/45	1"/22.5
8289142-35mm	42 1/8"/1070	1 3/4"/45	1"/22.5

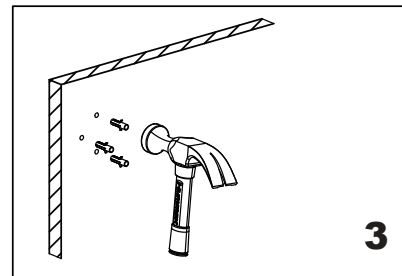
Fig.1



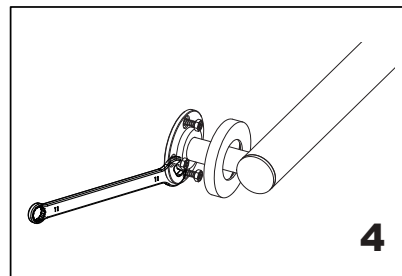
Mark (on the wall) locations of plugs through mounting plate using a pencil, refer to Fig.1



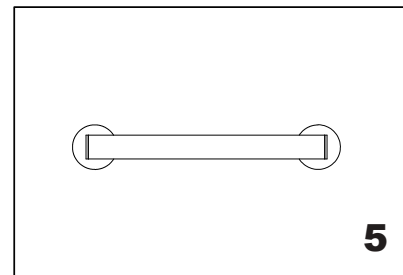
Drill 3/16" holes, make sure to keep drill level



Insert plugs into drilled holes, using a hammer to tap the plugs in, be careful not to break tile



Driver bolt nut directly into holes



Tighten the cover on the Mounting plate