

Tiffany 5930 | Air A12 Massage Series

Product Number: TIA12J5930CDFS 59" x 30" x 24"



STANDARD & OPTIONAL ACCESSORIES

JETS: 12 Total

- 12 Classic Air Jets

PUMPS

Air Pump Remote

CONTROLS

Remote Control

PURITY

HydroCleanse

DRAINS & OVERFLOWS INFORMATION

- Overflow: Integral Linear: Included- Polished Chrome or Brushed Nickel. **Optional** - White.
- Bath Drain: Pop up: Included- Polished Chrome or Brushed Nickel. **Optional** - White.
- In Floor Drain EZ Fast Connect (**optional**)

FAUCET INFORMATION

- Floor mount – verify spout distance

STANDARD ACCESSORIES

EZ Level Base • FDA Recipe Non-Toxic Food & Beverage Grade Plumbing (primarily) • 30 Point Quality Assurance Factory Test

ADDITIONAL INFORMATION

6 1/2" or more space required to access equipment panel. Tub may also need to be shifted or disconnected in some situations.

Access panel equipment design and location may vary based on model.

Your licensed installer must water test and run all equipment before leaving your home to ensure proper operation and validate warranty.



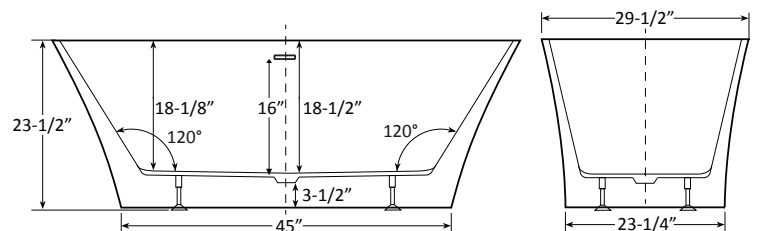
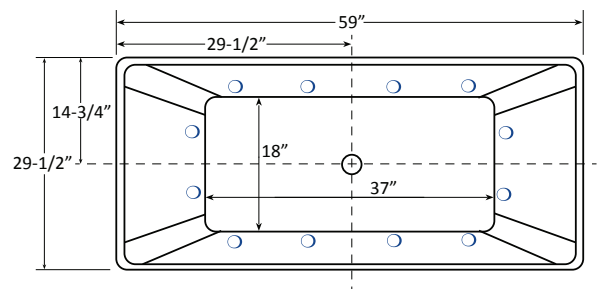
TECHNICAL SPECIFICATIONS

Center drain.

Pump Location: Remote only

ELECTRICAL REQUIREMENTS

(1) 115v 20AMP GFCI Circuit



Specifications and features are subject to change without notice and are + .25". All final measurements should be taken from tub on site.

HydroMassage Products LLC • 303-341-1845 • Fax: 303-341-1850 • www.hydromassageproducts.com